



## ADDISON MARSHALL

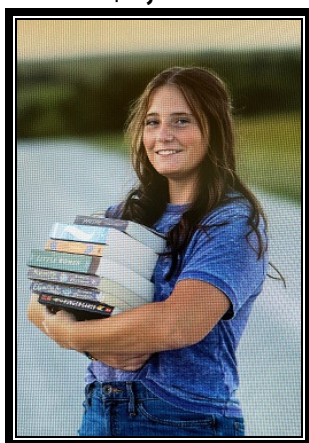
Emporia, KS

*Attending:* Kansas State University, Manhattan, KS

*Studying:* Kinesiology

*Career Interest:* Physical Therapy

**BARRY DAN HARSH MEMORIAL  
SCHOLARSHIP  
\$2,500**



## MADelyn BOLCH

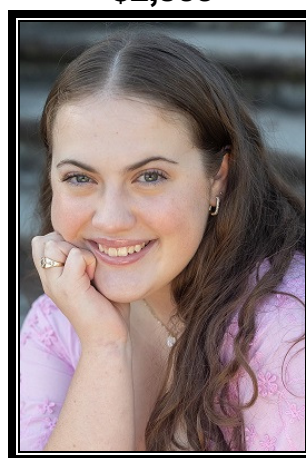
Kansas City, MO

*Attending:* University of Missouri, Columbia, MO

*Studying:* Journalism

*Career:* Law

**MATTIE ELLEN HARSH MEMORIAL  
SCHOLARSHIP  
\$2,500**



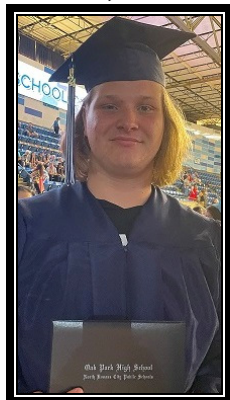
## LOGAN CARTER WESTLING

Gladstone, MO

*Attending:* MO Western University, St. Joseph, MO

*Studying:* Education *Career:* Teacher/Coach

**LANDRY HODGES SCHOLARSHIP  
\$2,500**



## AVERY JAYE PETERSON

Kansas City, MO

*Attending:* University of Kansas, Lawrence, KS

*Studying:* Business *Career:* Entrepreneur

**BLASCHKE FAMILY SCHOLARSHIP  
\$1,500**





## **NESSA MONTGOMERY**

Brookfield, MO

*Attending:* Northwest MO State University, Maryville, MO

*Studying:* Human Services or Agriculture Media

*Career:* Diabetes Social Worker or Agriculture Mktg

**DYLAN FANSHER SCHOLARSHIP**  
**\$1,000**



## **AUBREY RIGGS**

Blue Springs, MO

*Attending:* Park University, Parkville, MO

*Studying:* Business

*Career:* Non Profit Fundraising

**THE BEN WALSH SCHOLARSHIP**  
**\$ 500**





2023

TYPE 1 CHAMPIONS

  
**Scholarship  
Program**  
RECIPIENTS

## ASHTYN CARNS

Derby, KS

*Attending:* Wichita State University, Wichita, KS

*Studying:* Media Arts

*Career:* Creative Director/Concept Artist

**BARRY DAN HARSH MEMORIAL  
SCHOLARSHIP  
\$2,000**



## BRETT WININGAR

Independence, MO

*Attending:* Missouri Southern State University,  
Joplin, MO

*Studying:* Biology/Pre-Medicine *Career:* Pathologist

**LANDRY HODGES SCHOLARSHIP  
\$2,000**



## ELLIOTT CRABTREE

Overland Park, KS

*Attending:* University of Kansas, Lawrence, KS

*Studying:* Engineering *Career:* Electrical Engineering

**BLASCHKE FAMILY SCHOLARSHIP  
\$1,500**



## HAYLEE DEITCH

Norborne, MO

*Attending:* University of MO, Columbia, MO

*Studying:* Biochemistry *Career:* Lab Work: Agriculture

**DYLAN FANSHER SCHOLARSHIP  
\$1,000**





**2023**

TYPE 1 CHAMPIONS



**REESE FLEMING**

Lee's Summit, MO

*Attending:* Northwest MO State University, Maryville, MO

*Studying:* Nursing

*Career:* Nursing

**BARRY DAN HARSH MEMORIAL  
SCHOLARSHIP: BOOK AWARD  
\$ 500**





**2022**

TYPE 1 CHAMPIONS



## **SYDNEY SMITH**

Hiawatha, KS

*Attending:* Kansas State University, Manhattan, KS

*Studying:* Music Education *Career:* Band Director

### **BARRY DAN HARSH MEMORIAL SCHOLARSHIP**

**\$2,000**



## **TRINITY REED**

Greenwood, MO

*Attending:* Missouri State University, Springfield, MO

*Studying:* Nursing *Career:* Nursing

### **LANDRY HODGES SCHOLARSHIP**

**\$1,500**



## **PETE WANN**

Fredericktown, MO

*Attending:* Wartburg College, Waverly, IA

*Studying:* Engineering *Career:* Mechanical Engineering

### **BLASCHKE FAMILY SCHOLARSHIP**

**\$1,500**



## **JULIETTE TALLEY**

Overland Park, KS

*Attending:* University of MO, Columbia, MO

*Studying:* Nursing *Career:* NICU Nursing

### **DYLAN FANSHER SCHOLARSHIP**

**\$1,000**







**2022**

(CONTINUED)

TYPE 1 CHAMPIONS



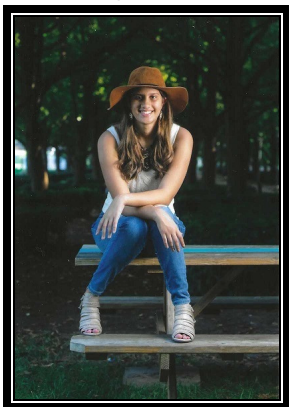
## **NILASHA RAMIREDDY**

Lenexa, KS

*Attending:* William Jewell College, Liberty, MO

*Studying:* Nursing *Career:* Nursing

**BARRY DAN HARSH MEMORIAL  
SCHOLARSHIP/BOOK AWARD  
\$500**



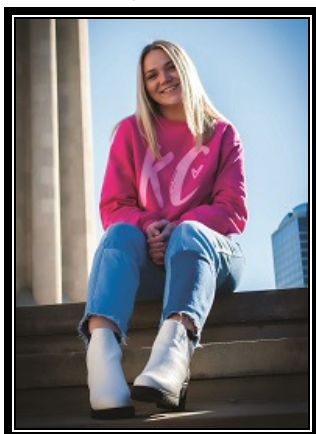
## **ALYSSA ORENDER**

Lee's Summit, MO

*Attending:* Missouri State University, Springfield, MO

*Studying:* Elementary Education *Career:* Teacher

**BARRY DAN HARSH MEMORIAL  
SCHOLARSHIP/BOOK AWARD  
\$500**





**2021**

TYPE 1 CHAMPIONS



RECIPIENTS

## **KALLI PFEIFER**

Russell, KS

*Attending:* Fort Hays State University, Hays, KS

*Studying:* Health & Human Perf *Career:* Doc of Chiropractic

**BARRY DAN HARSH  
MEMORIAL SCHOLARSHIP  
\$1500**



## **KENISYN MELLEMA**

Lenexa, KS

*Attending:* Jo Co CC, OP, KS (2 yrs)

*Studying:* Engineering *Career:* Aeronautical Engineering

**BLASCHKE FAMILY SCHOLARSHIP  
\$1500**



## **DYLAN FANSHER**

Kansas City, MO

*Attending:* MU, Columbia, MO

*Studying:* Clinical/Diagnostic Radiography *Career:* Radiologist

**LANDRY HODGES SCHOLARSHIP  
\$1,000**



## **LAUREN KROH**

Lee's Summit, MO

*Attending:* UCM, Warrensburg, MO

*Studying:* Child & Family Dev *Career:* School Counselor

**KEAGHAN MICHAEL MCDANIEL  
MEMORIAL SCHOLARSHIP  
\$1000**





2020

TYPE 1 CHAMPIONS



## ELIZABETH COLLINS

Abilene, KS

*Attending:* Kansas University, Lawrence, KS

*Studying:* Environmental Studies

**BARRY DAN HARSH  
MEMORIAL SCHOLARSHIP  
\$2500**



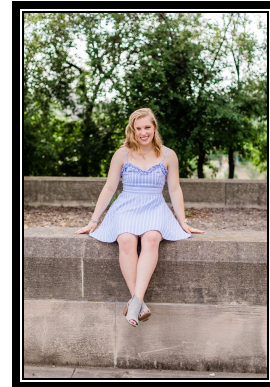
## JADE RATTERMAN

Olathe, KS

*Attending:* JCCC, Overland Park, KS

*Studying:* Elementary Education or Child Life Specialist

**COURAGE CHAMPION  
SCHOLARSHIP  
\$1200**



## RAYLEE MARTINEZ

Blue Springs, MO

*Attending:* Missouri Western State, St. Joseph, MO

*Studying:* Law or Medicine, Undecided

**BLASCHKE FAMILY  
SCHOLARSHIP  
\$1000**







2019

TYPE 1 CHAMPIONS



RECIPIENTS

## MARY CLARE HALPIN

Leawood, KS

*Attending:* Kansas State University, Manhattan, KS

*Studying:* Undecided

**BARRY DAN HARSH  
MEMORIAL SCHOLARSHIP  
Spirit...\$2500**



## CABIN MANLEY

Prairie Village, KS

*Attending:* Kansas University, Lawrence, KS

*Studying:* Accounting

**DAN LICKEL  
GETTING BACK UP AGAIN SCHOLARSHIP  
\$1000**



## ALYSSA MEYER

Independence, MO

*Attending:* University of Arkansas, Fayetteville, AR

*Studying:* Pediatric Nursing

**BARRY DAN HARSH  
MEMORIAL SCHOLARSHIP  
Heart...\$1000**



## AMARA WEBB

Olathe, KS

*Attending:* Webster University, Webster Groves, MO

*Studying:* Musical Theatre

**COURAGE CHAMPION  
SCHOLARSHIP  
\$1000**





**2017**

TYPE 1 CHAMPIONS



RECIPIENTS

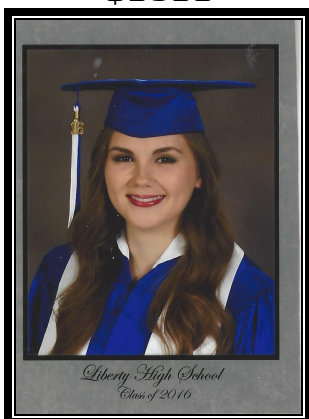
## ALEXANDRA LAYCOCK

Kansas City, MO

*Attending:* Truman State University, Kirksville, MO

*Studying:* English

**BARRY DAN HARSH  
MEMORIAL SCHOLARSHIP  
\$2500**



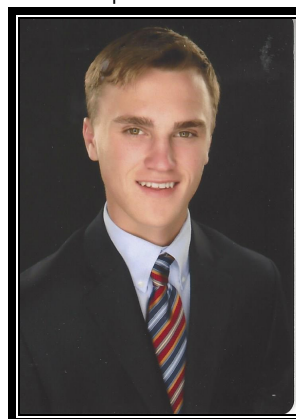
## GRANT GIARDINO

Kirkwood, MO 63122

*Attending:* Kansas State University, Manhattan, KS

*Studying:* Accounting

**GETTING BACK UP AGAIN  
DAN LICKEL SCHOLARSHIP  
\$1500**



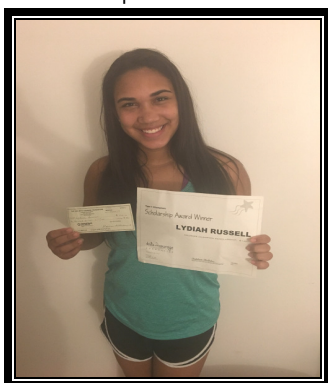
## LYDIAH RUSSELL

St. Louis, MO 63132

*Attending:* Missouri State University, Springfield, MO

*Studying:* Nursing

**COURAGE CHAMPION  
SCHOLARSHIP  
\$1000**



## HANNAH CATHERINE MALLORY

Lawrence, KS

*Attending:* University of Tulsa, Tulsa, OK

*Studying:* Nursing

**CHILDREN'S MERCY HOSPITAL  
DIABETES TEAM BOOK AWARD  
\$200**





**2016**

TYPE 1 CHAMPIONS



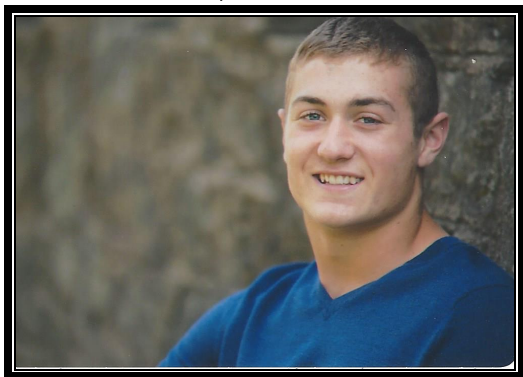
## **LANDRY HODGES**

Fort Leavenworth, KS

*Attending:* University of Mississippi, University, MS

*Studying:* Business

**BARRY DAN HARSH MEMORIAL SCHOLARSHIP**  
\$2500



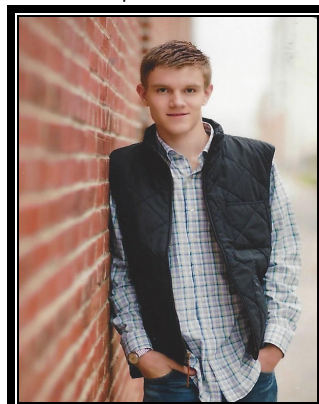
## **AARON O'ROARK**

Clinton, MO

*Attending:* University of Central Missouri, Warrensburg, MO

*Studying:* Political Science/Law

**COURAGE CHAMPION SCHOLARSHIP**  
\$1000



## **ANDREW KIRBY**

St. Joseph, MO

*Attending:* University of Missouri, Columbia, MO

*Studying:* Engineering

**JANET LUDWIGS MEMORIAL SCHOLARSHIP**  
\$500



## **AUBRI SMITH**

Desloge, MO

*Attending:* University of Missouri, Columbia, MO

*Studying:* Chemistry

**BARRY DAN HARSH MEMORIAL  
SCHOLARSHIP/BOOK AWARD**  
\$250





*Kids With Courage would not be able to  
provide these Scholarships/Awards without  
the help of our amazing community  
and supporters.*

AN EXTRA SPECIAL THANKS TO DONORS HONORING  
THEIR LOVED ONES BY PROVIDING A NAMED  
SCHOLARSHIP:



The Barry Dan Harsh  
Memorial Scholarship:  
\$2,500



The Mattie Ellen Harsh  
Memorial Scholarship  
\$ 2,500



Barry Dan Harsh was a longtime friend to the Kids With Courage Foundation. Barry was not a man of riches, but Barry found joy in giving and making sure that Kids With Courage had the funds needed to continue on with our important work until his passing in 2015. Barry's caring nature showed as he took the time to learn about Kids With Courage, the work we do, and the children and families we serve. Barry took action to help us do that work.

Soon after Barry's passing, Barry's incredible mother Mattie Ellen Harsh carried on Barry's tradition for many years until her passing in 2023. She knew his love of our mission and wanted to continue by honoring her son. Mary Ellen's heart of gold and friendship will always be remembered and deeply missed.

Then again, the torch was passed. Mary Ellen's other son, and Barry's brother, David G. Harsh wanted to honor his brother and his mom, and continues with the Barry Dan Harsh Scholarship, and added one in his Mom's name. David honors both his brother and mom, by gifting two educational Scholarships. Through these scholarships, Barry and Mattie Ellen's incredible spirits will live on as they continue to make a difference bringing encouragement, hope, strength and education into the heart and lives of our incredibly brave Type 1 students. This family truly knows how to love!

The Landry Hodges Scholarship  
\$ 2,500



Landry Hodges is a 2015 graduate of Leavenworth High School, Leavenworth, KS, and a 2020 graduate of the University of Mississippi. Landry was the first recipient of the generous Barry Dan Harsh Memorial Scholarship in 2016. The Hodges family decided to join in the giving spirit and help support a fellow Type 1 student who embodies the same fighting spirit as Landry has. Landry is not only a Type 1 warrior, he is a cancer survivor. Landry and his family are endeared to the KC area because they were stationed at Ft. Leavenworth for 7 years. In 2010, Landry was diagnosed with Type 1 at age 13, and was treated at Children's Mercy Hospital where he received a Brave Box. The significance in that gesture immediately signaled to the Hodges family that they were not alone. KWC was a source of Information, encouragement, and empowerment.

The Hodges family considers it a great honor to offer a \$2,500 scholarship to a deserving student who shows a strong commitment to community, leadership, academics and athletics. This is the 4th year of the Landry Hodges Scholarship.

(CONTINUED)

## 2024 SCHOLARSHIPS

### The Blaschke Family Scholarship \$ 1,500



The Blaschke's are an amazing family where Type 1 lives, and have been champions of our work for a very long time. Alexa, the youngest of Chuck and Sheila was diagnosed with Type 1 before KWC was even around, many years ago. When Sheila and Chuck learned about KWC they got involved in fundraising, board service, and helping in any way that they could.

Their two kids are all grown now, but they care about those battling Type 1 and take action to support them.

The entire Blaschke family is involved--Chuck, Sheila, Chaz (brother of Alexa, and daughter, Alexa. (It's a Type 1 thing) They have provided Scholarships in 2020, 2021, 2022, 2023 and 2024 in honor of Alexa, and have plans to keep it going.

They are making an important impact in the lives of students, as well as all of us here at Kids With Courage!

### The Dylan Fansher Scholarship \$ 1,000



Dylan Fansher received the Landry Hodges Scholarship in 2021 and headed off to college at MU, Columbia. Dylan immediately took action as she just couldn't wait to give back. Dylan, family, Dylan's Army Softball Team and with the incredible help from the KC Metro USA Softball Association, they raised and donated thousands of dollars from the proceeds of their softball event in May 2021, 2022, and 2023 for the KWC Brave Box Program.

Their blessings weren't finished as they also gifted KWC with \$1,000 Scholarships in 2021, 2022, 2023, and again for 2024.

Dylan received a Brave Box when she was a little girl, but hasn't forgotten how it made her feel, and helped her start her medical journey with Type 1, bravely.

While all support is needed by our little organization to survive, we are inspired by support we receive comes from families who received a Brave Box. It validates our hard work, and assures that programming can continue.

### The Ben Walsh Scholarship \$ 500



Sam and Audrey Scott wanted to honor their nephew Ben who was diagnosed with Type 1 in 2021 in a special way. They decided a Scholarship to a fellow Type 1 was perfect!

*"Ben, we are so proud of you for all that you've accomplished and all that you will do in the future. Continue to tackle life with courage and optimism (and snazzy clothes). You inspire all of us.*

*We love you!*

*-- Uncle Sam and Aunt Audrey"*



*Keeping Dreams Alive!*

*MISSION:*

PROVIDING OPPORTUNITIES THAT EMPOWER, EDUCATE, AND CREATE POSITIVE OUTCOMES IN THE LIVES OF KIDS OF ALL AGES, AND THEIR FAMILIES WHOSE LIFE LONG JOURNEY INCLUDES BATTLING TYPE 1 DIABETES.